

2024 annual report to the Community

Flagstaff Hill Kindergarten

Flagstaff Hill Kindergarten number: 3629

Partnership: South Valley



Preschool director:

Clare Crew

Signature

Date of endorsement:

17/02/2025



Government
of South Australia
Department for Education

Context Statement

Information about Flagstaff Hill Kindergarten is available on the centres website, as well as the Australian Children's Education and Care Quality Authority (ACECQA) website.

Governing Council Report

2024 was a great year for the FHK GC!

We were proud to change our group names to Kurraka and Ngawaka! Our families and children really embraced this change and what it represented.

We welcomed Ellie to our Teaching Team who was an Educator for the Ngawaka group. Ellie is well liked amongst her peers and the children. We look forward to her continuing with us into 2025.

We were (finally) assessed by the Education Standards Board that we had been patiently awaiting for a few years. The Teaching Team worked tirelessly to do their best to ensure FHK was meeting all standards. We are very proud to say that we achieved a Meeting National Quality Standards rating in the assessment from the Education Standards Board.

The GC approved some site improvements which were excitedly welcomed by the children and families of 2024. These improvements were:

- Rubber Swing Pad
- Installation of new oven
- Mulberry Tree rejuvenation
- Acoustic Panelling Installation (to happen in 2025 - stay tuned!)

Our families generously chipped into to help around the kindy with 2x working bees carried out throughout the year. Many offering their time, tools and other generous donations of plants etc.

The GC reviewed multiple Policies and the Kindy's Statement of Philosophy. The GC members were able to put their thoughts forward as to what they considered important to the FHK and what it represented to them for the Statement of Philosophy. We also were able to update the following policies:

- Sun Protection
- Food and Nutrition
- Water Safety

All 3 of these policies are very important to the safety of our children and so we took great pleasure in doing this.

Finally, we were pleased to raise funds for the kindy. Some of these fundraisers were:

- Nature Play onesies
- Donated jars of honey
- Bleasdale Wines
- Selling Wet Bags
- EduThread commission
- Children's self portraits

2024 was a very successful year for FHK, the GC and the wider community! We look forward to seeing what 2025 brings!

Preschool Attendance

	Term 1	Term 2	Term 3	Term 4
2021 centre	88.9%	82.2%	92.9%	88.5%
2022 centre	91.6%	85.3%	78%	81.3%
2023 centre	92.8%	87.2%	87.1%	90%
2024 centre	97%		89.2%	

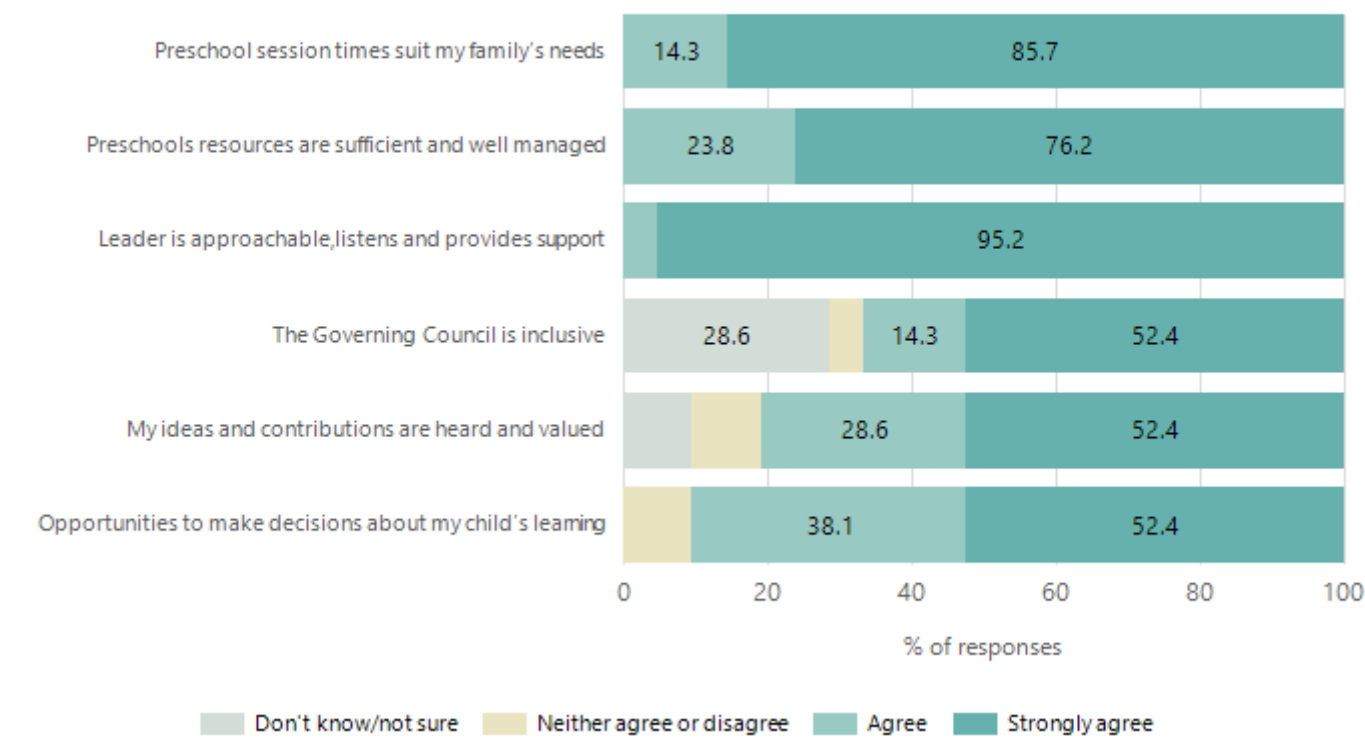
Based on attendances recorded in the two-week reference period each term. Data for eligible enrolments as described in the department's Enrolment policy. Attendance rates may differ to previous reporting with the transfer from calculations based on deemed attendance to actual attendance using booked hours divided by attended hours. Data Source: Department for Education Attendance Data, Semester 1 Report 2024. A blank cell indicates there we no students enrolled.

Attendance Comment

In South Australia, preschool attendance is not compulsory, but it is strongly encouraged. Preschool gives children the best opportunity to develop skills, which prepare them for school. These benefits include establishing positive routines and habits, friendships and connections as well as developing communication, problem-solving and creative skills. All children are entitled to access a preschool program over 4 terms the year before they start school.

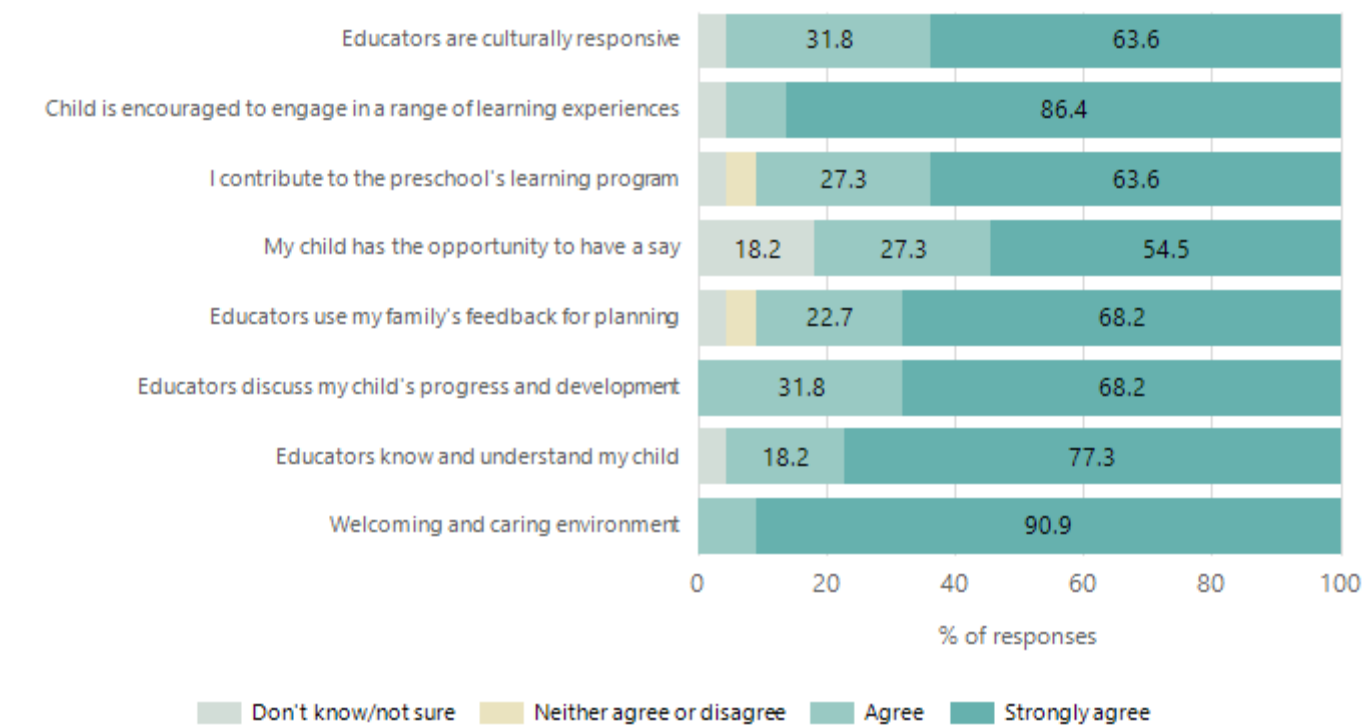
Preschool Family Opinion Survey

Governance, Leadership and Management



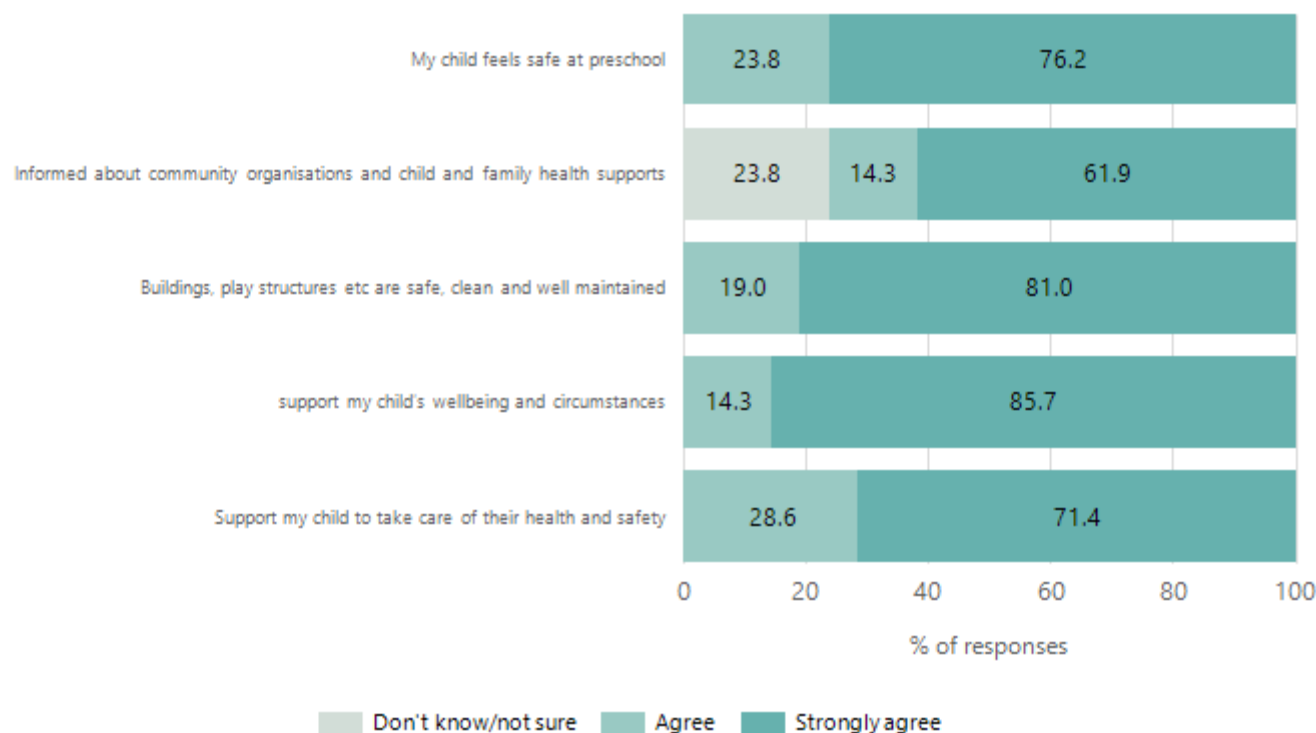
Data Source: 2024 Department for Education Preschool Family Opinions Survey, Term 3 2024.

Quality of Teaching and Learning



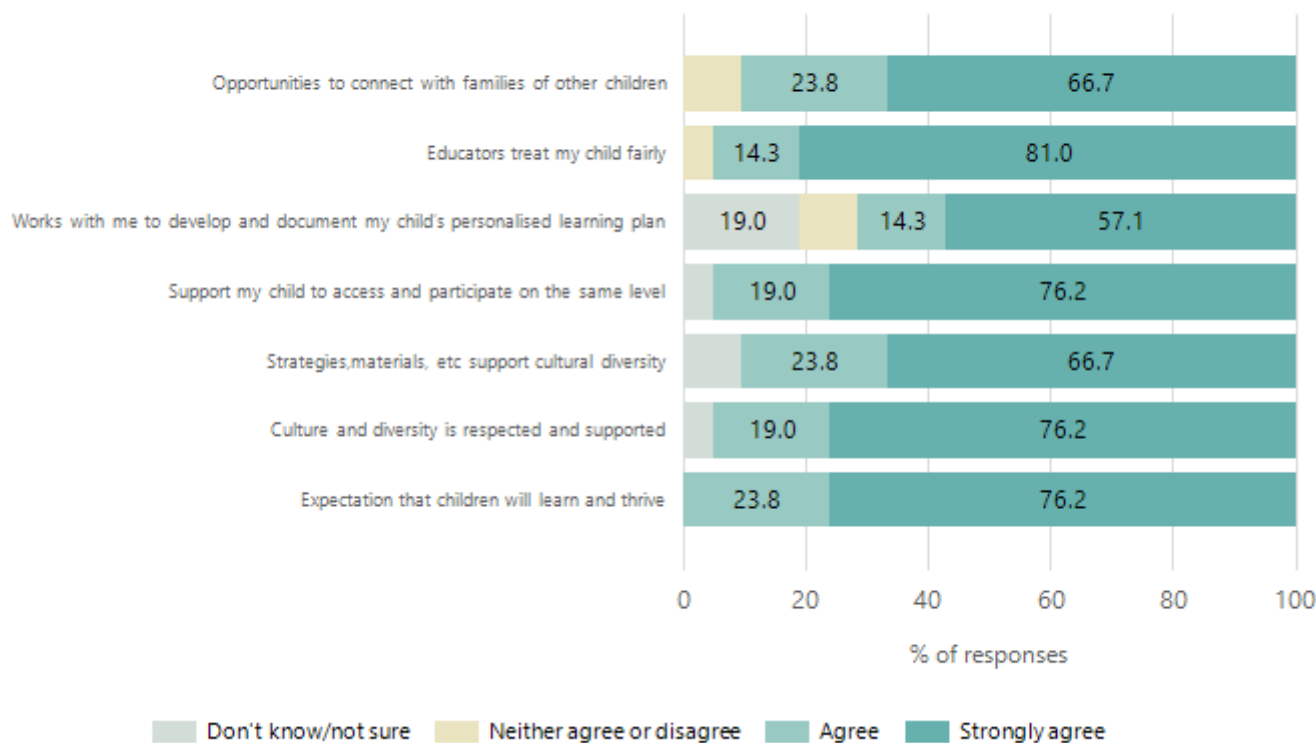
Data Source: 2024 Department for Education Preschool Family Opinions Survey, Term 3 2024.

Safety, Health and Wellbeing



Data Source: 2024 Department for Education Preschool Family Opinions Survey, Term 3 2024.

Support and Inclusion



Data Source: 2024 Department for Education Preschool Family Opinions Survey, Term 3 2024.

Destination Schools

Feeder Schools (Site number - Name)	2022	2023	2024
0637 - Brighton Primary School		3.3%	
1018 - Flagstaff Hill Primary School	72.2%		
1226 - Craighburn Primary School		6.7%	10.5%
8284 - Our Saviour Lutheran School			3.5%
8387 - Sunrise Christian School Marion		3.3%	
9017 - St Therese Primary School	5.6%		
9074 - Stella Maris Parish School			3.5%
9999 - Unknown	13.9%	75.0%	75.4%

Note: The data is collected in term 3. It does not reflect actual schools enrolled in by existing preschool children. A blank cell indicates there was no data for students enrolled.

Data Source: Department for Education Destination Data Report, 2024.

Highest Qualifications held by the teaching workforce and workforce composition

All teachers at this school are qualified and registered with the SA Teachers Registration Board.

Qualification Level	Number of Qualifications
Bachelor's degrees or Diplomas	2
Postgraduate Qualifications	3

Data Source: Data extracted from Mandatory Workforce Information Collections as on the last pay date of June 2024. As self-reported by staff in the system.

Please note: Data includes staff who are Actively employed and on extended paid leave. Please note only the highest qualification of the Teaching staff is reported. Excludes any number of other certifications earned.

Workforce composition including indigenous staff

	Teaching Staff		Non-Teaching Staff	
	Indigenous	Non-Indigenous	Indigenous	Non-Indigenous
Full-Time Equivalents	0.0	3.4	0.0	0.5
Persons	0.0	5.0	0.0	2.0

Data Source: Data extracted from Mandatory Workforce Information Collection as on the last pay date of June 2024.

Please note: Data includes staff who are actively employed and on extended paid leave. "Indigenous category" is self-reported by staff in the system.

Financial Statement

Funding Source	Amount
Grants: State	
Grants: Commonwealth	
Parent Contributions	
Fund Raising	
Other	

Data Source: School supplied data.