

2025 annual report to the Community

# Flagstaff Hill Kindergarten

Flagstaff Hill Kindergarten number: 3629

Partnership: South Valley



Preschool director:

Andrea Gore

Signature

Date of endorsement:

16/02/2026



Government  
of South Australia  
Department for Education

# Context Statement

Information about Flagstaff Hill Kindergarten is available on the centres website, as well as the Australian Children's Education and Care Quality Authority (ACECQA) website.

## Governing Council Report

It was a fun and celebratory 2025 for FHK GC!

We were all very excited to get stuck in and help organise the big 50<sup>th</sup> birthday celebration for the kindy. The event was extremely well attended by kindy families (new and previous) and the community, including a visit from Erin Thompson MP, who helped dig up the time capsule buried in the bush kindy yard. Previous directors and teachers also attended the event, and everyone loved looking through the photos from the past years.

The celebrations included a bake sale (that sold out!), further Bleasdale Wine sales with a specially designed 50<sup>th</sup> birthday label designed by GC member Kate Dean and her Dad, with the help of the students who added their touch by colouring leaves to add to the tree. Kate also drew some beautiful pictures of a rainbow lorikeet and a magpie which were sold at the event.

The GC also played an active role in:

- Supporting decision making and financial management of the kindy
- Centrally funding new plumbing of the staff toilet (which posed an ongoing issue and expense to the kindy for years)
- Fierce advocacy from treasurer Mark Dowd for the removal of the leaking asbestos shed, which was replaced over the holidays
- Approval of the new mud kitchen and cubby play space, with construction to begin with Betterland this year

Finally, we were pleased to raise funds for the kindy. Some of these fundraisers were:

- Nature play onesies
- Bleasdale Wines
- Selling wet bags
- EduThread commission
- Children's self-portraits

2025 was a very successful year for the GC, FHK and the wider community, our meetings have been supportive and impactful.

## Preschool Attendance

	Term 1	Term 3
2022 centre	91.6%	78%
2023 centre	92.8%	87.1%
2024 centre	97%	89.2%
2025 centre	94.6%	86%

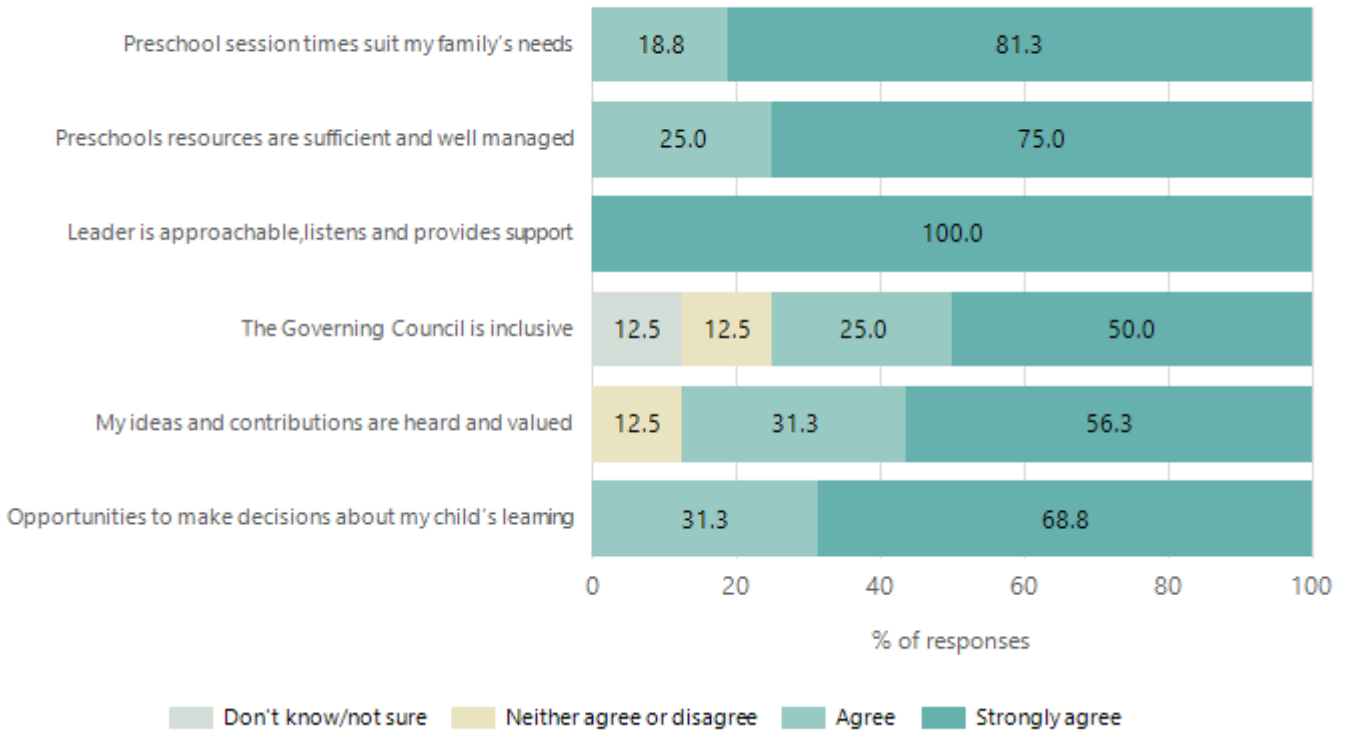
Based on preschool sessions attended during a two-week reference period in Term 1 and Term 3. The table represents the proportion of hours attended out of total hours enrolled (booked). Data Source: Department for Education attendance data.

## Attendance Comment

In South Australia, preschool attendance is not compulsory, but it is strongly encouraged. Preschool gives children the best opportunity to develop skills, which prepare them for school. These benefits include establishing positive routines and habits, friendships and connections as well as developing communication, problem-solving and creative skills.

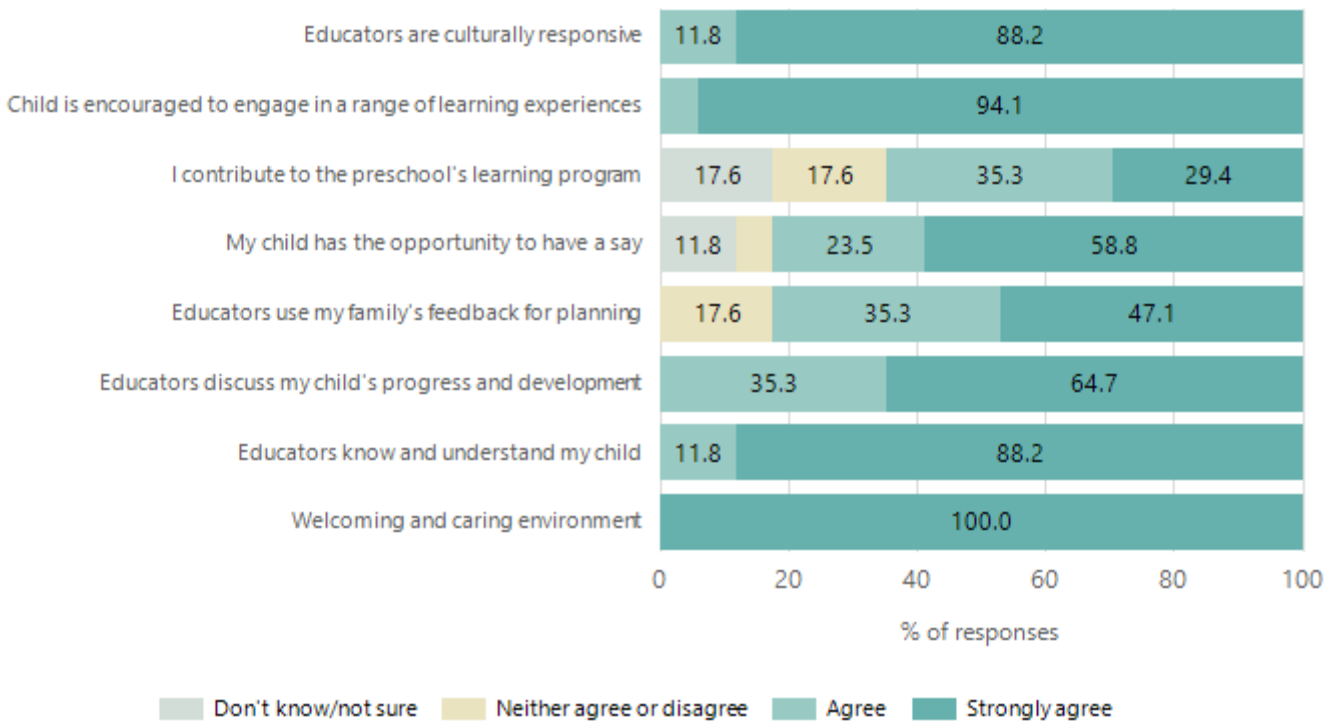
# Preschool Family Opinion Survey

## Governance, Leadership and Management



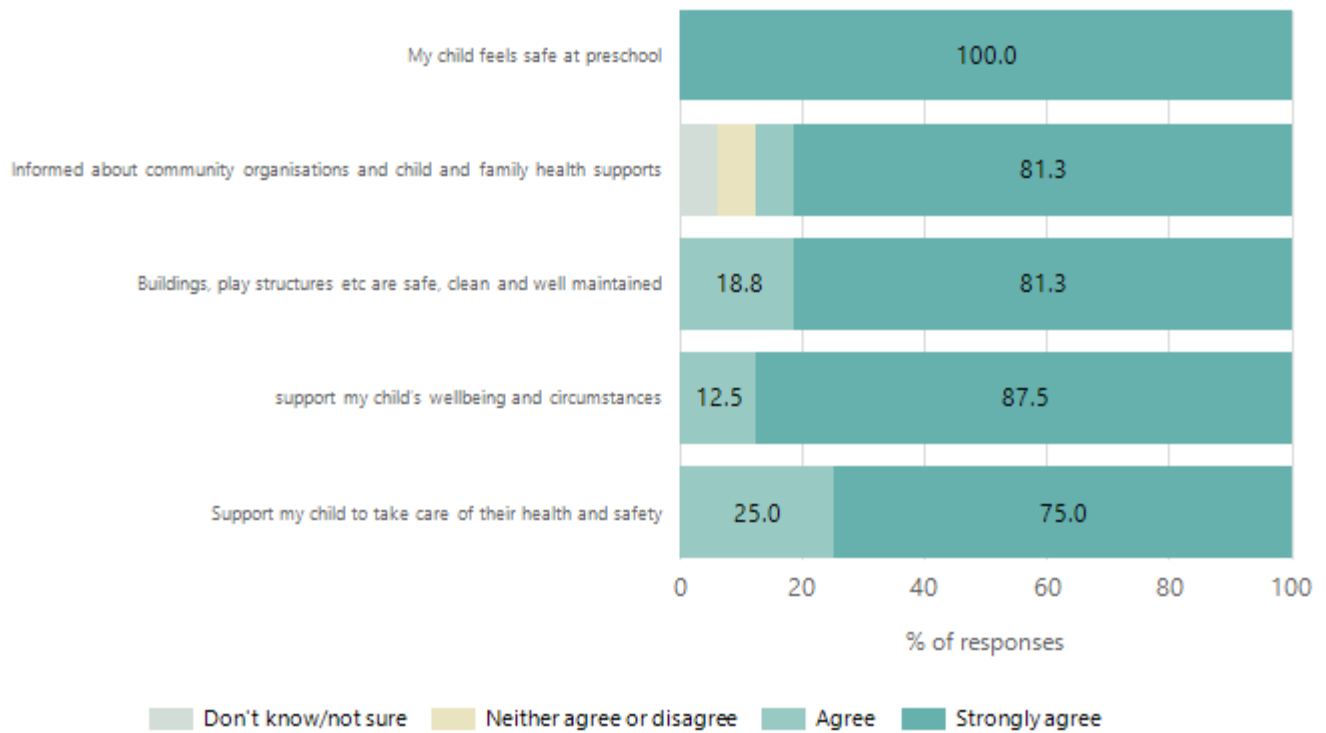
Data Source: 2025 Department for Education Preschool Family Opinions Survey, Term 3 2025.

## Quality of Teaching and Learning



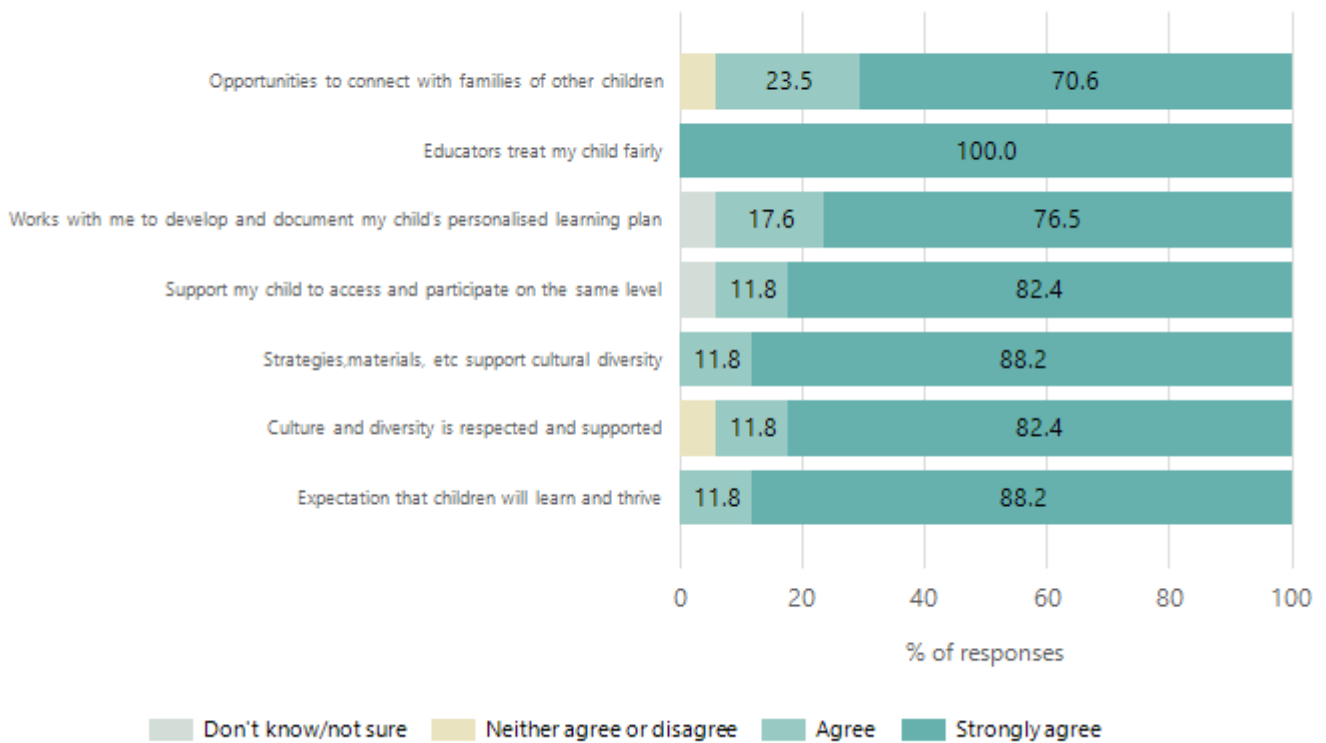
Data Source: 2025 Department for Education Preschool Family Opinions Survey, Term 3 2025.

## Safety, Health and Wellbeing



Data Source: 2025 Department for Education Preschool Family Opinions Survey, Term 3 2025.

## Support and Inclusion



Data Source: 2025 Department for Education Preschool Family Opinions Survey, Term 3 2025.

## Destination Schools

Feeder Schools (Site number - Name)	2023	2024	2025
0637 - Brighton Primary School	3.3%		
1226 - Craighburn Primary School	6.7%	10.5%	17.0%
8284 - Our Saviour Lutheran School		3.5%	
8387 - Sunrise Christian School Marion	3.3%		
8434 - School of the Nativity			3.8%
9074 - Stella Maris Parish School		3.5%	
9999 - Unknown	75.0%	75.4%	64.2%

Note: The data is collected in term 3. It does not reflect actual schools enrolled in by existing preschool children. A blank cell indicates there was no data for students enrolled.

Director's Note: A significant percentage of children in unknown data category enrolled at Flagstaff Hill Primary School

Data Source: Department for Education Destination Data Report, 2025.

## Highest Qualifications held by the teaching workforce and workforce composition

All teachers at this school are qualified and registered with the SA Teachers Registration Board.

Qualification Level	Number of Qualifications
Bachelor's degrees or Diplomas	3
Postgraduate Qualifications	3

Data Source: Data extracted from Mandatory Workforce Information Collections as on the last pay date of June 2025. As self-reported by staff in the system.

Please note: Data includes staff who are Actively employed and on extended paid leave. Please note only the highest qualification of the Teaching staff is reported. Excludes any number of other certifications earned.

### Workforce composition including indigenous staff

	Teaching Staff		Non-Teaching Staff	
	Indigenous	Non-Indigenous	Indigenous	Non-Indigenous
Full-Time Equivalents	0.0	4.1	0.0	0.9
Persons	0.0	6.0	0.0	2.0

Data Source: Data extracted from Mandatory Workforce Information Collection as on the last pay date of June 2025.

Please note: Data includes staff who are actively employed and on extended paid leave. "Indigenous category" is self-reported by staff in the system.

## Financial Statement

Funding Source	Amount
Grants: State	\$574,527.83
Grants: Commonwealth	\$0
Parent Contributions	\$33,475.00
Fund Raising	\$7,905.16
Other	\$3,663.40

Data Source: School supplied data.